

# Slim

## The most classical ScreenLine motorized screen.

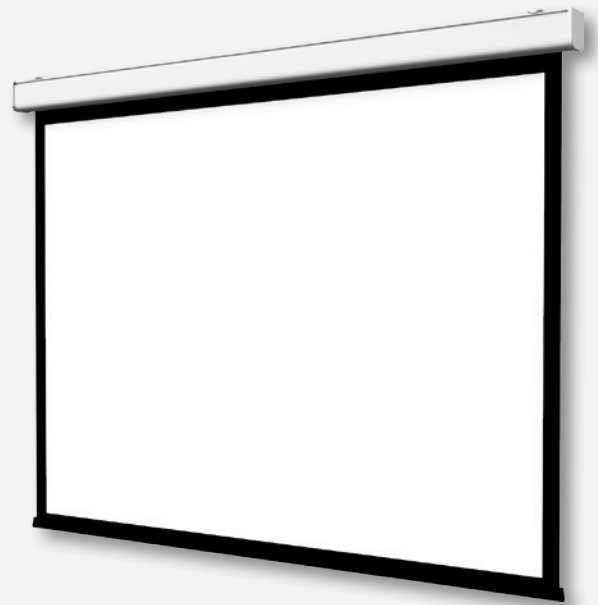
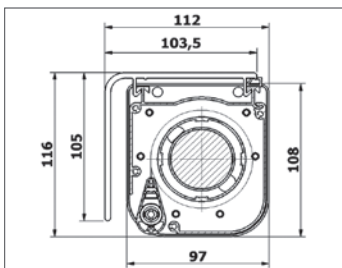
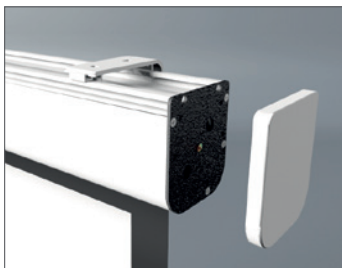
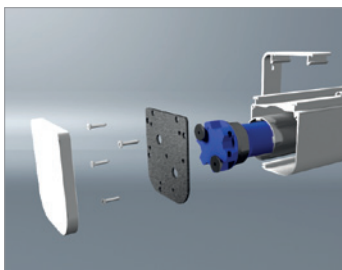
It reaches 250 cm base inside a small box with rounded corners. Its matt white finish and neutral look make it ideal for living-rooms, halls, and small and medium-sized offices.

The side covering end plates in the same colour as the box complete the screen concealing the screws. The PVC front and retro-projection fabrics are available in all sizes and formats, with or without black borders.

**It is the quietest screen in its category.** The special geometry of the brackets makes it possible to hang it on a rear wall, from the ceiling or even from a front beam.

With the quick&safe system, it can be hung on a rear wall, from the ceiling or from a front beam very easily.

## Technical details



## Screen characteristics

- 100% aluminium mechanics
- very quiet functioning
- electric diverter included
- wide range of fabrics and sizes
- quick&safe mounting system
- coordinated side end plates
- customized sizes

## Available fabrics

- White Ice
- Home Vision
- Grey High Contrast
- Coral retro-projection
- Microperforated